



Regione Toscana



Complex
“Corso Gramsci 110 – Pistoia”
Municipality of Pistoia (PI)



Regione Toscana

MAP OF TUSCANY WITH LOCATION OF PISTOIA

MAIN DISTANCES:

Florence 35Km
Rome 310Km
Milan 300Km
Pisa 70Km
Siena 80Km

AIRPORT DISTANCES:

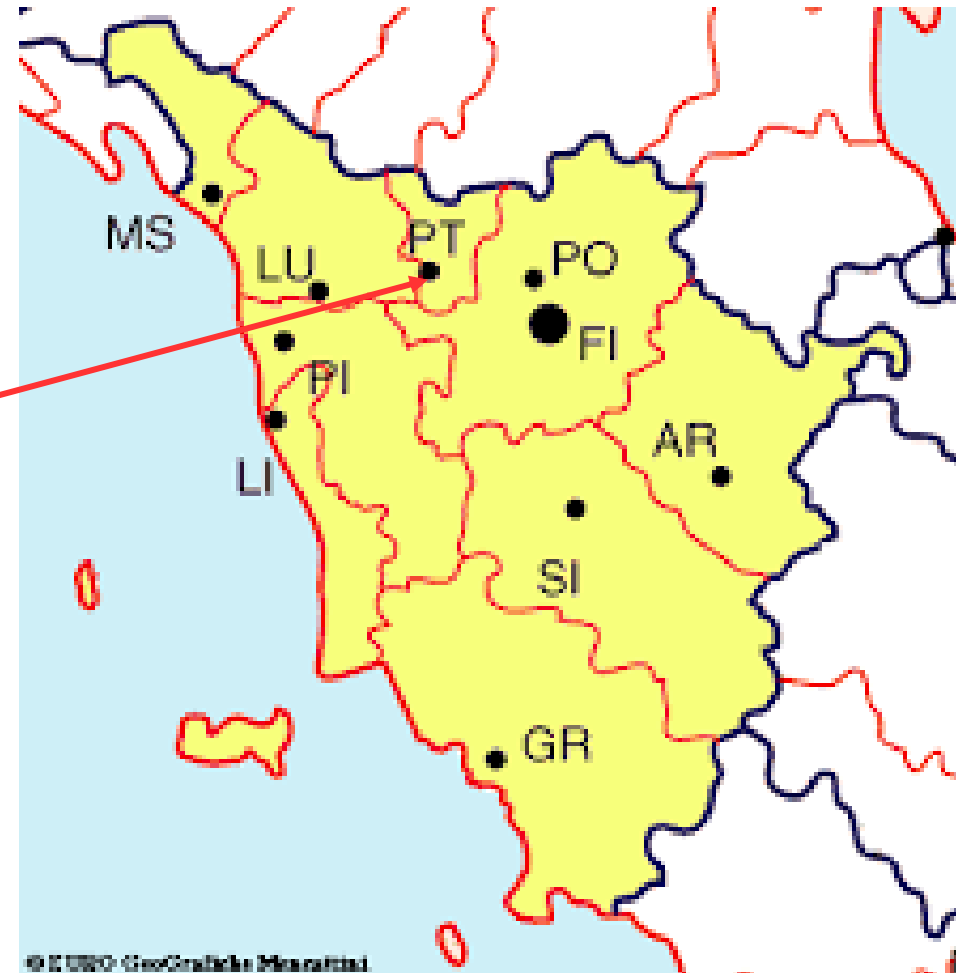
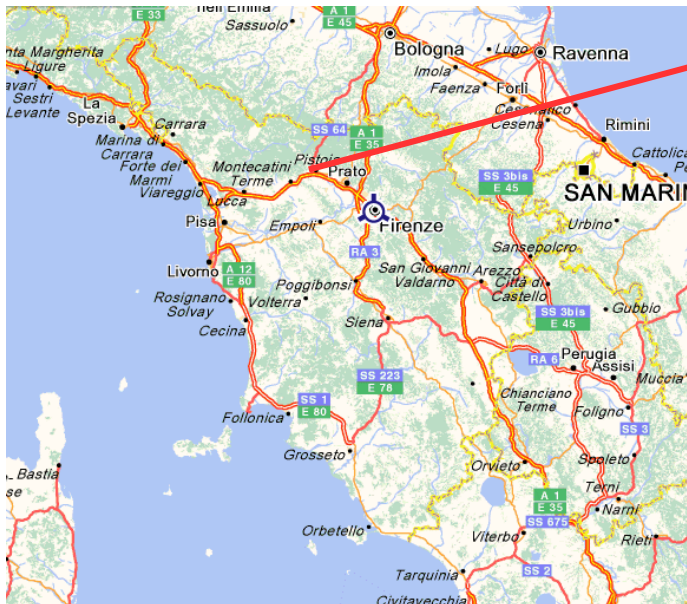
Florence 35 Km
Pisa 70 km
Bologna 100Km

MAIN MOTORWAYS:

A11 Firenze Mare 5 Km

MAIN TRAIN STATION:

PISTOIA (city center) 2 Km



© EUSO - GeoGraphics Mercatini



Regione Toscana

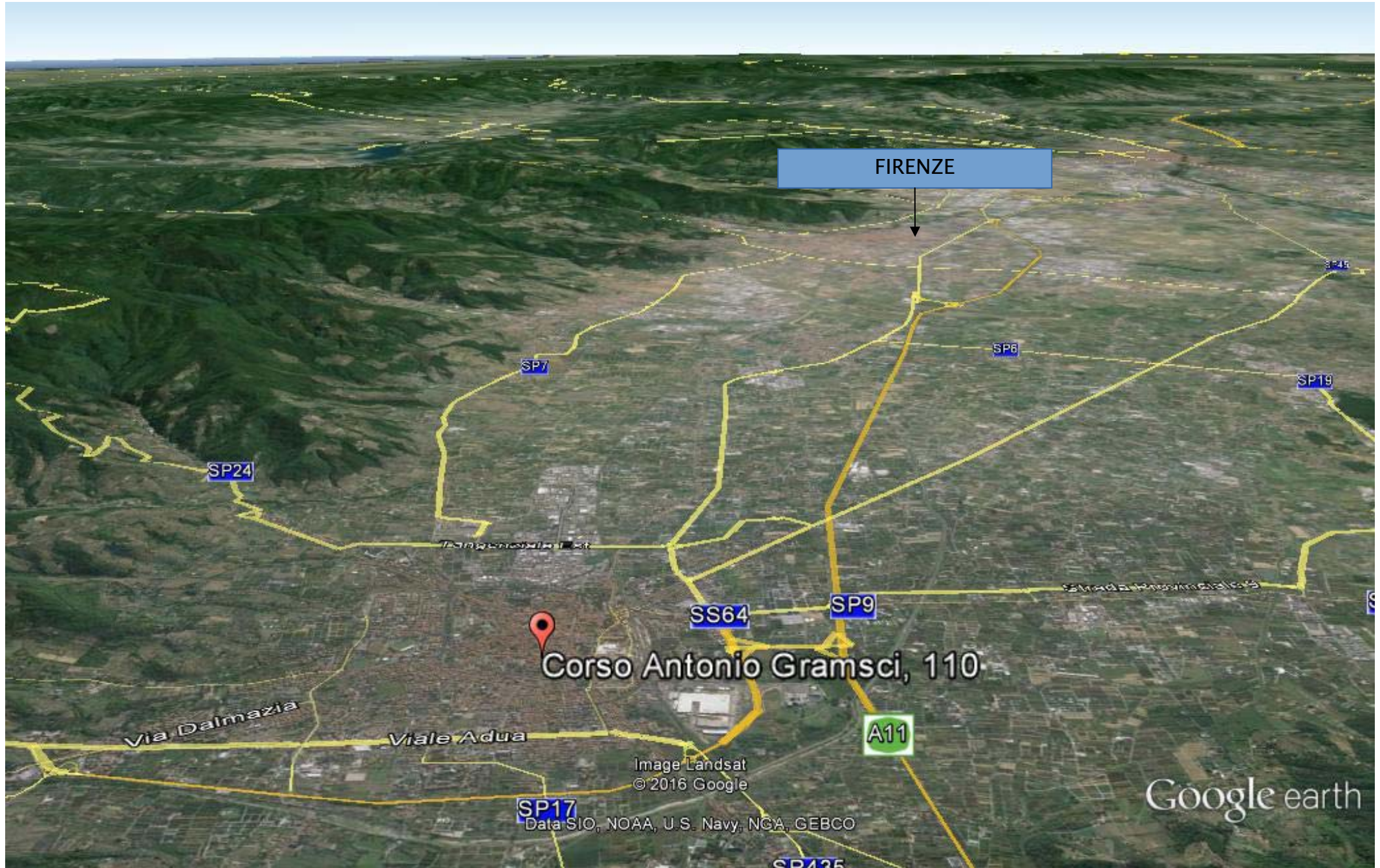
THE REGION'S MAIN ATTRACTIONS





Regione Toscana

LOCATION





Regione Toscana

CORSO GRAMSCI COMPLEX





Regione Toscana

GENERAL DESCRIPTION OF INVESTMENT OPPORTUNITIES IN PISTOIA

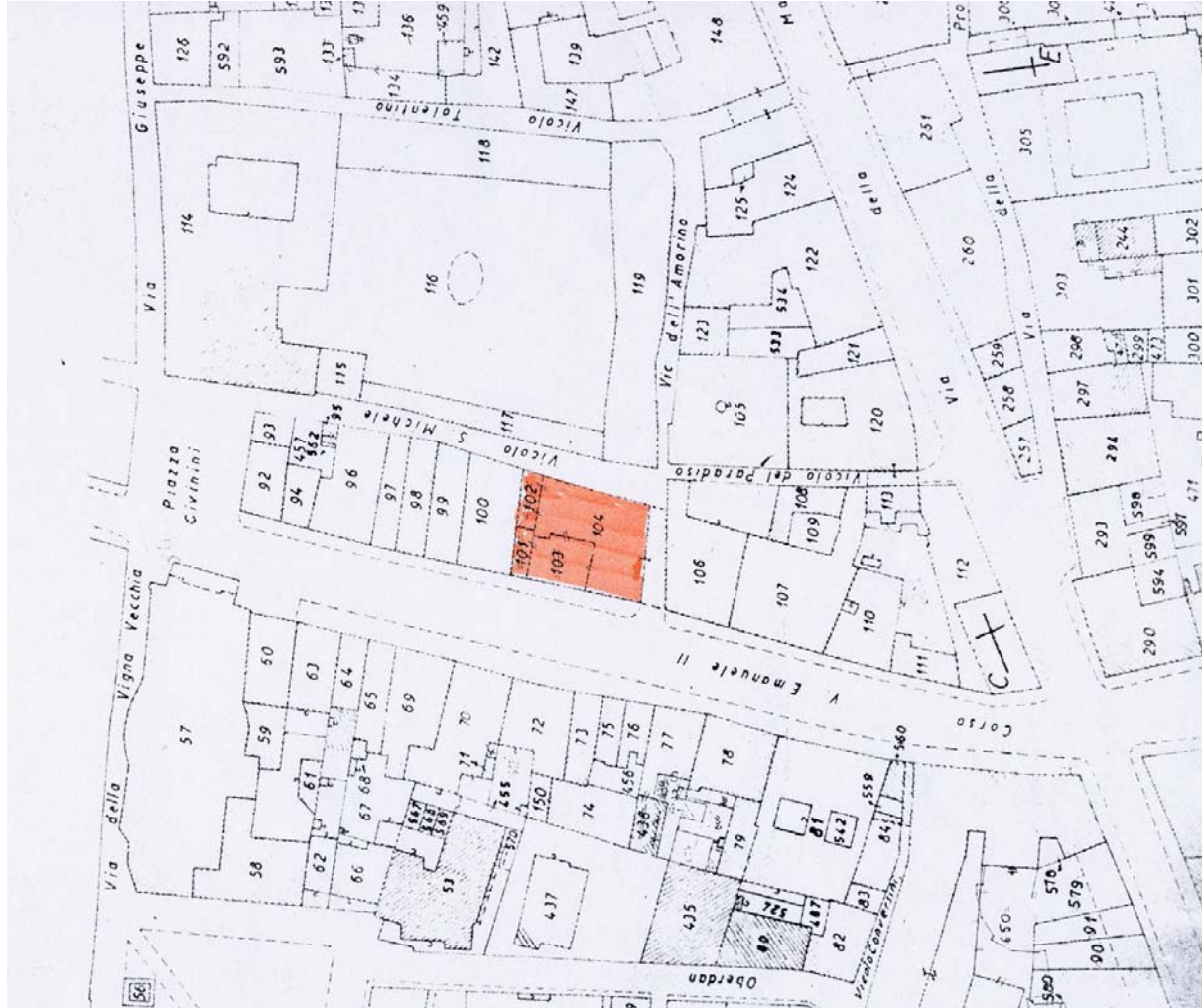
MAIN FEATURES:

- Property of the Region of Tuscany
- Building intended for sale by public auction
- Building in good condition
- Total gross area 1,778 sqm on five off-ground floors
- Intended use PUBLIC / COMMERCIAL OFFICES
- Complex bound by the Ministry of Cultural Heritage and Activities, Italian decree 97/2006



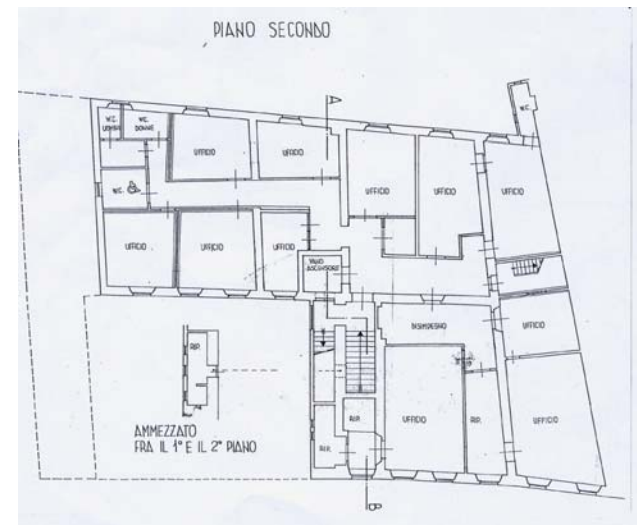
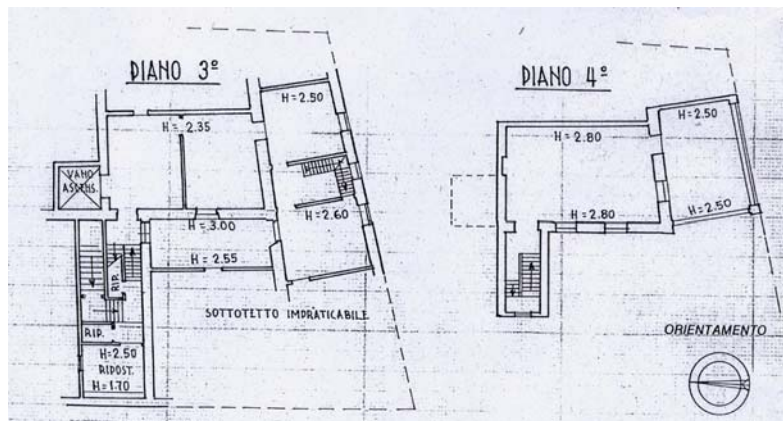
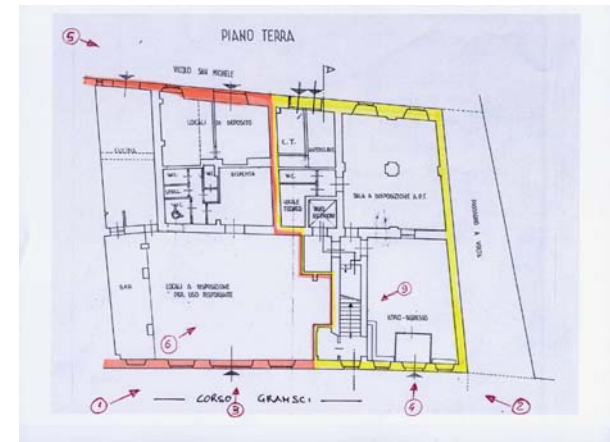
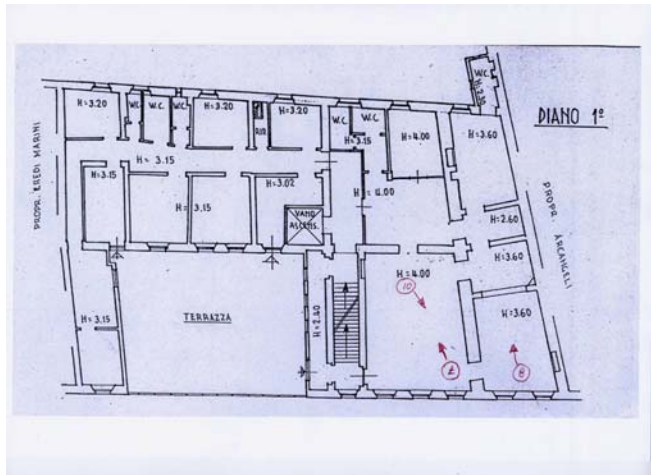


DETAILED CLASSIFICATION FOR THIS PROPERTY





PLANIMETRIC REPRESENTATION





HISTORICAL OVERVIEW

PISTOIA – VIA GRAMSCI n. 110

The building consists of four floors above the ground and features valuable artistic and architectural elements. On the ground floor a large entrance leads to the stone stairway that joins the different levels. The rooms have ribbed vaults with fourteenth century decorations. On the first floor there are wooden coffered ceilings and two large rooms with eighteenth-century stuccos and painted decorations. The upper floors have wooden ceilings and tiled floors.

The fourth floor room is characteristic with its balcony open on two sides. The building has been owned by the Episcopal Seminary of Pistoia that in 1956 transferred it to the Tourism Board. It was then received by the Region of Tuscany with the Regional Act 9/88, art. 28.